

# B&S Geological Training Information Pack

B&S Geological invites you to attend our comprehensive training program developed by Desmond Subramani, a renowned expert with over 25 years of geological modelling expertise across diverse global mineral resource districts.

At B&S Geological, we take pride in offering a comprehensive range of courses tailored to meet the diverse needs of the industry. We offer various training options suitable for different levels of proficiency in 3D modelling softwares Leapfrog Geo, Leapfrog Edge, and Seequent Central. Whether you're a first-time user seeking to embark on your software journey or a seasoned professional aiming to enhance your skills, our courses are designed to empower you.

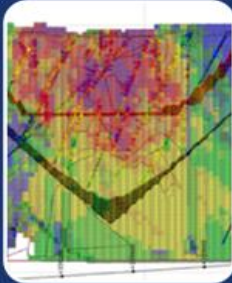
Unlock your potential with our diverse training solutions, designed to cater to your individual needs. Choose from our extensive range of offerings and embark on a transformative learning journey.

## B&S GEOLOGICAL TRAINING OPTIONS

Public Training Sessions	Private Training Sessions	Customised Training Sessions	Geomodelling Support
Our comprehensive training program covers a wide variety of courses set on specific dates in our training calendar. Develop your 3D modelling skills from novice to advanced user.	Our training courses are presented as private sessions to clients. This option accommodates larger groups, geologists looking for a refresher, or for those wanting an exclusive one-on-one experience.	Let us develop a customised training course using your own data and model requirements. This option includes a hands on learning experience and a comprehensive training manual of your custom content.	Geomodelling Support is an ongoing service that we offer to clients needing modelling support throughout the year. Whenever you have a geomodelling query, contact us for support.
<p><b>Specification:</b></p> <ul style="list-style-type: none"> <li>• Training dates available in the training calendar</li> <li>• Training presented online</li> <li>• Standard training content</li> <li>• Individual attendee registration</li> <li>• Bulk discount available</li> <li>• CPD accredited</li> </ul>	<p><b>Specification:</b></p> <ul style="list-style-type: none"> <li>• Training dates selected by client</li> <li>• Training presented online or onsite</li> <li>• Standard training content</li> <li>• Individual or group attendee registration</li> <li>• Able to accommodate large groups</li> <li>• Bulk discount available</li> <li>• CPD accredited</li> </ul>	<p><b>Specification:</b></p> <ul style="list-style-type: none"> <li>• Training dates selected by client</li> <li>• Training presented online or onsite</li> <li>• Customised training content</li> <li>• Individual or group attendee registration</li> <li>• Able to accommodate large groups</li> <li>• Not CPD accredited</li> </ul>	<p><b>Specification:</b></p> <ul style="list-style-type: none"> <li>• Support available online</li> <li>• Billed per hour</li> <li>• Bulk discount available</li> <li>• Not CPD accredited</li> </ul>

B&S Geological is an official Channel Partner of Seequent. In addition to consulting, implementation, training, skills development, and auditing services, we also sell Seequent products - Leapfrog Geo, Leapfrog Edge, Seequent Central, Geo Soft, MX Deposit, and others. We offer exclusive bundle deals on software and training purchases.

Our unwavering commitment to delivering the highest quality geological training sets us apart. We are dedicated to providing you with a comprehensive software solution that empowers your professional growth. Join us today and unlock the full potential of your geological expertise.



### Consulting Services

- 3D Geological modelling – Structure, Strat, Alteration, Mineralisation etc
- Mineral resource modelling
- Leapfrog Geo Audits and Reviews

### Implementation/ Mentorship

- Implementation of site specific geological modelling workflows
- Customised Skills Development
- Ongoing Geo modelling Support and Guidance

### Training Programs

- Online/In Person public and private training courses
- Basic, Intermediate and Advance levels
- Deposit specific courses – Kimberlite, Lode Gold, Maps to Models, Geostats and Coal

### Software

- Seequent Software Sales
- Leapfrog Geo, Edge
- Seequent Central
- MX Deposit
- Imago
- Oasis Montaj

# B&S Geological Training Program

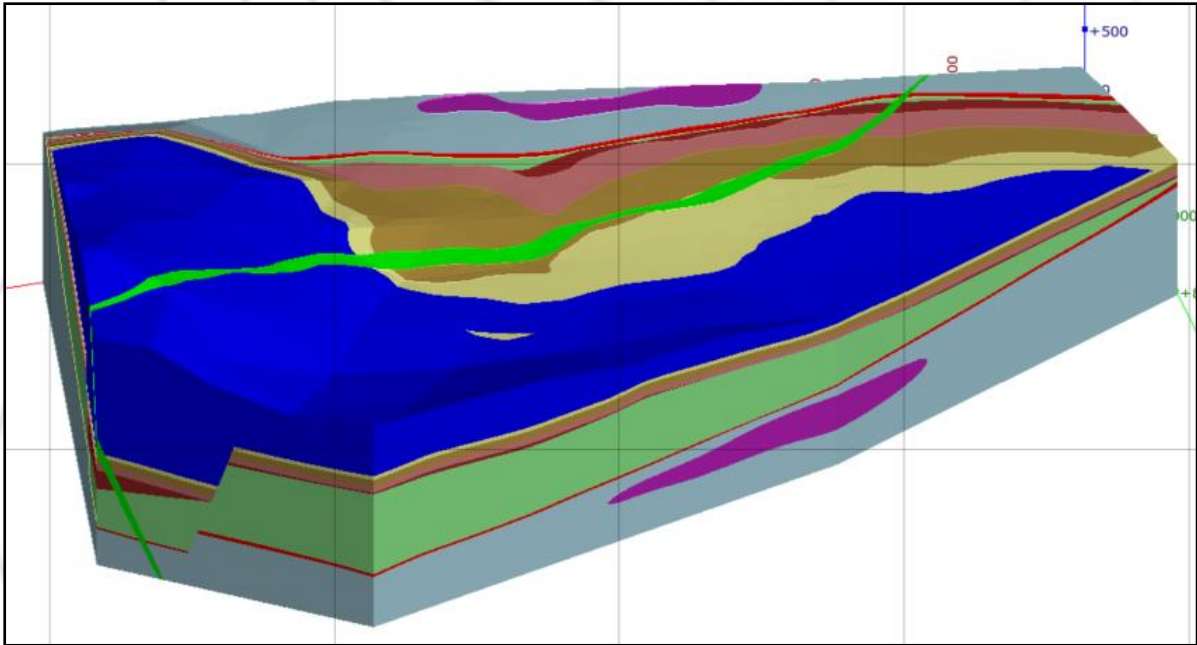
B&S Geological offers various training courses on 3D geological modelling softwares: Leapfrog Geo, Seequent Central, and Leapfrog Edge. This pack contains information on the different training courses offered.

LEAPFROG GEOLOGICAL MODELLING- TRAINING PROGRAM						
Introduction To Leapfrog Geo  (2 – Days) 2 CPD Credits	Intermediate Modelling in Leapfrog Geo (2 – Days) 2 CPD Credits	Geostatistics and Grade Estimation using Leapfrog Edge (5 – Days)	Introduction To Leapfrog Edge  (2 – Days)	Specialised Modelling using Leapfrog Geo  (1 or 2 - Days)	Introduction to Seequent Central  (Half-day)	Leapfrog for Managers  (2 hours)
Geologists wanting to develop their skills in 3D geological modelling.  Learn the basic tools to build a geological model.	Geologists that are already familiar with Leapfrog Geo, wanting to further develop their modelling skills. Updating an existing model using new drilling structural data and complex interpretations.	This is an advanced course for Geologists that are familiar with Leapfrog Geo, wanting to develop their skills in geostatistics and grade estimation with the use of Leapfrog Edge.	For Geologists with knowledge of Leapfrog Geo and grade estimation, who wants to apply their grade estimation skills in Leapfrog Edge.	Users that are looking to enhance their knowledge and geological modelling skills for specific geological settings.	“Bringing teams and data together”. Visualise, track, and manage geological data from a centralised, auditable environment.	For Managers wanting to learn how to navigate Leapfrog Viewer, to visualise and interrogate models.
<b>Key Topics:</b> <ul style="list-style-type: none"> <li>• Interface and main menu</li> <li>• Scene tools</li> <li>• Importing data</li> <li>• Building and editing a simple geological model</li> <li>• Presentation tools</li> </ul>	<b>Key Topics:</b> <ul style="list-style-type: none"> <li>• Updating an existing model</li> <li>• Interval selection tool</li> <li>• Importing structural data</li> <li>• Creating faults</li> <li>• Importing and using cross-sections</li> <li>• Structural modelling</li> </ul>	<b>Key Topics:</b> <ul style="list-style-type: none"> <li>• Introduction to Geostatistics - theory</li> <li>• Building a mineralisation model</li> <li>• Geostatistics and block model Grade Estimation</li> <li>• Mineral Resource Tabulations</li> </ul>	<b>Key Topics:</b> <ul style="list-style-type: none"> <li>• Setting up domain parameters</li> <li>• Domain estimation</li> <li>• Variography</li> <li>• Evaluate estimators onto block models</li> <li>• Calculations and query filters</li> <li>• Creating a depletion model</li> </ul>	<b>Options available:</b> <ul style="list-style-type: none"> <li>• Kimberlite Pipe (1 CPD Credit)</li> <li>• From Maps to Models (1 CPD Credit)</li> <li>• Lode Gold Deposits (2-days) (2 CPD Credits)</li> </ul>	<b>Key Topics:</b> <ul style="list-style-type: none"> <li>• Central interface</li> <li>• Central Browser</li> <li>• Central Portal</li> <li>• Linking objects in Leapfrog Geo</li> <li>• Branches and priority</li> </ul>	<b>Key Topics:</b> <ul style="list-style-type: none"> <li>• Learning the Leapfrog Viewer interface.</li> </ul>



# Introduction to Leapfrog Geo

## Course Outline



B&S Geological invites you to attend our Introduction to Leapfrog Geo course to be held at our office in Bramley North, Sandton, Johannesburg or Online. Please see the training schedule for dates.

### **Summary**

**Duration:** 2 Day

**Course level:** Beginner

**Required skill:** Basic

**Price:** R9 870 (Excl. VAT)

**Audience:** Professional/Student Geologists

**Location:** South Africa and UK (Online)

**Time:** 08:30am – 16:30pm

**Tel:** +27(0)22 007 0035

**Email:** [info@bnsgeo.co.za](mailto:info@bnsgeo.co.za)

### **Course Description**

Geological modelling is a powerful and useful skill for any geologist. This course is designed to equip participants with the skills to generate geological models using Leapfrog Geo, a 3D geological modelling software. Attendees of this course will be taken through the basics of importing data all the way to creating a complete geological model.

## ***Course Outline***

Leapfrog basic functionalities and workflows;  
Importing and validation of drillhole data;  
Importing and georeferencing maps;  
Building geological models using multiple wireframing tools;  
Building and applying faults to geological models;  
Updating an existing model with new drilling;  
Presentation tools;  
Assessment.

## ***Target Audience***

Geologists, with or without modelling experience, wanting to learn 3D geological modelling using Leapfrog Geo.

## ***Equipment Requirements***

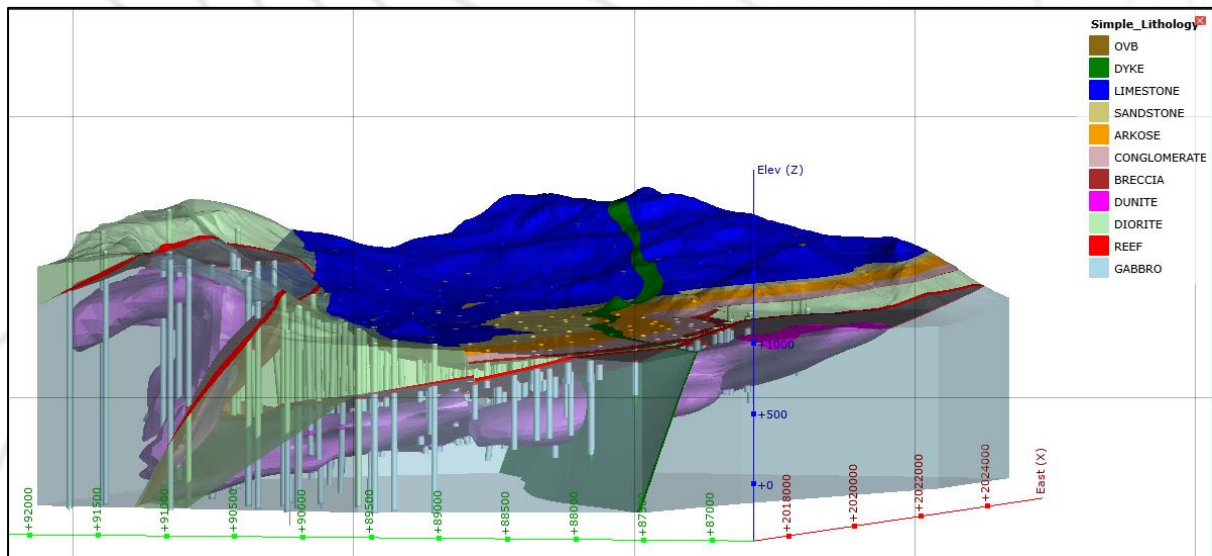
You will be required to bring your own laptop and mouse.

## ***Terms & Conditions***

Due to the limited seating, full payment will be required to secure your spot on the course. Please enquire about a special concession for geologists paying in their personal capacity or unemployed geologists.

# Intermediate Modelling in Leapfrog Geo

## Course Outline



B&S Geological invites you to attend our Intermediate Modelling in Leapfrog Geo course to be held at our office in Bramley North, Sandton, Johannesburg or Online. Please see the training schedule for dates.

### Summary

**Duration:** 2 Day

**Course level:** Intermediate

**Prerequisite:** Introduction to Leapfrog Geo Course or equivalent

**Time:** 08:30am – 16:30pm

**Price:** R9 870 (Excl. VAT)

**Audience:** Professional/Student Geologists

**Location:** South Africa and UK (Online)

**Tel:** +27(0)22 007 0035

**Email:** [info@bnsgeo.co.za](mailto:info@bnsgeo.co.za)

### Course Description

This course is designed to equip participants with the skills to expand and update an existing geological model with new drilling, mapping and structural data using Leapfrog Geo, Seequent's 3D geological modelling software. Attendees of this course will be taken through the basics of appending data, using advanced polyline editing tools, as well as an in depth look at the structural modelling tools that Leapfrog Geo has to offer.



## ***Course Outline***

Expanding and updating an existing model with new geological information  
Importing new structural data  
Creating a fault from surface mapping and downhole structural measurements  
Structural modelling using the form interpolants and structural trends  
Modelling of folded geological units  
Importing and using cross-sections to edit surfaces  
Advanced polyline tools and interpretation

## ***Target Audience***

Geologists, with modelling experience, wanting to expand on their knowledge of 3D geological modelling using Leapfrog Geo.

## ***Equipment Requirements***

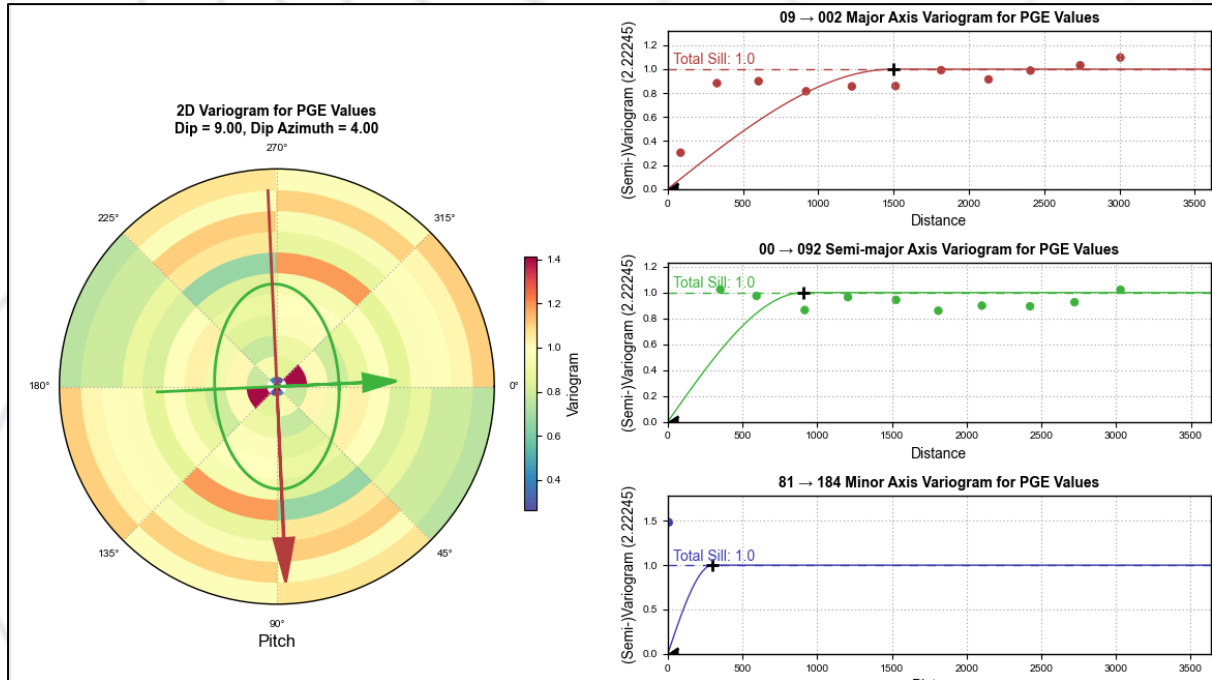
You will be required to bring your own laptop and mouse.

## ***Terms & Conditions***

Due to the limited seating, full payment (or Purchase Order) will be required to secure your spot on the course. Please enquire about a special concession for geologists paying in their personal capacity or unemployed geologists.

# Geostatistics and Grade Estimation using Leapfrog Edge

## Course Outline



B&S Geological invites you to attend our theoretical and practical course on Domain Modelling, Geostatistics, Grade Estimation, and Mineral Resource Tabulation, using Leapfrog Edge. The 5-day course is to be held at our office in Bramley North, Sandton, Johannesburg. Please see the training schedule for dates.

### Summary

**Duration:** 5 Days  
Geologists

**Course level:** Advanced

**Prerequisite:** Intermediate level skills in Leapfrog Geo

**Time:** 08:30am – 16:30pm

**Price:** R17 600 (Excl. VAT)

**Audience:** Professional/Student

**Location:** Johannesburg, South Africa

**Tel:** +27(0)22 007 0035

**Email:** [info@bnsgeo.co.za](mailto:info@bnsgeo.co.za)

### Course Description

This course assumes that attendees have a knowledge of Leapfrog Geo (intermediate to advanced level). This course is designed to equip participants with the skills to develop their knowledge and skills of geostatistics and grade estimation with the use of Leapfrog Geo, as well as Leapfrog Edge (Seequent's industry-standard resource estimation software). Attendees of this course will be taken through the theory of statistics, geostatistics and grade estimation, practical mineralisation modelling and



domaining, practical geostatistics and variography, practical grade estimations, and grade-tonnage calculations.

## ***Course Outline***

- Introduction to Statistics, Geostatistics and Grade Estimation (theory)
- Updating an existing Leapfrog Geo project
- Creating a refined model for mineralisation domains in Leapfrog Geo
- Creating a numerical model
- Statistical data analysis and domain selection
- Refining numerical values using compositing
- Understanding the principles of Variography in Leapfrog Edge
- Variogram calculations and modelling
- Creating a Block Model
- Creating a domained estimation, QKNA, and multi-element estimation using Leapfrog Edge
- Variables, calculations, and filters
- Block Model statistics and Validation
- Mineral Resource Tabulation and Grade Tonnage Tables

## ***Target Audience***

Geologists, with modelling experience, wanting to develop their knowledge and skills of geostatistics and grade estimation with the use of Leapfrog Geo and Leapfrog Edge.

## ***Equipment Requirements***

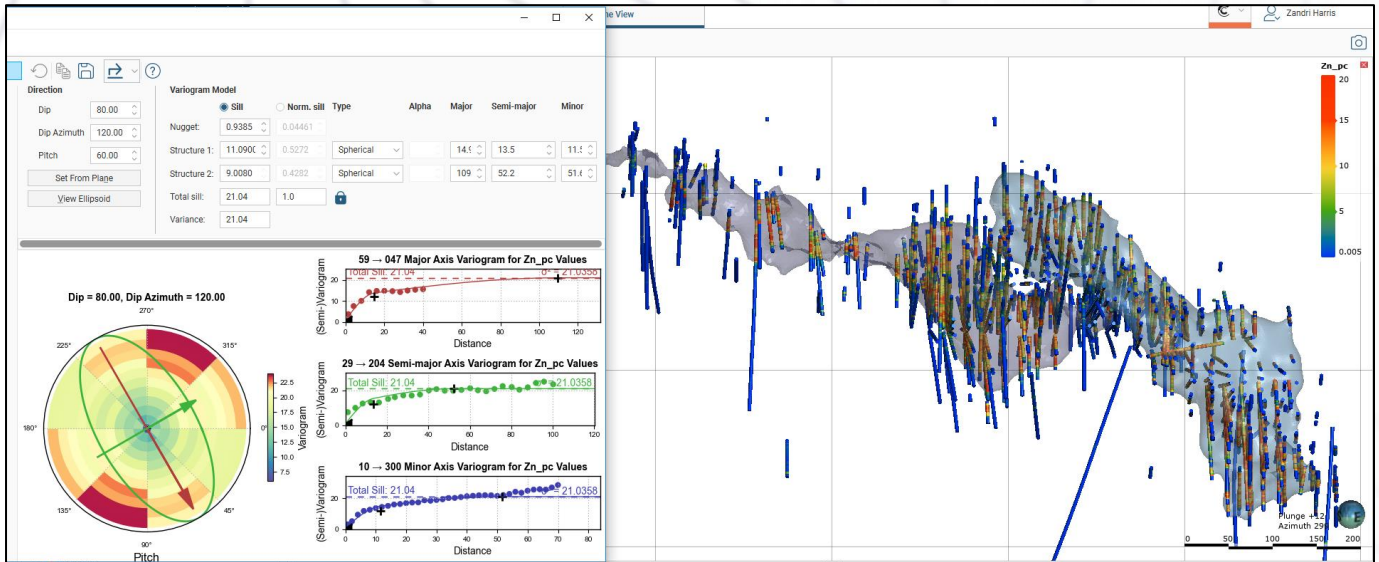
You will be required to bring your own laptop and mouse.

## ***Terms & Conditions***

Due to the limited seating, full payment (or Purchase Order) will be required to secure your spot on the course. Please enquire about a special concession for geologists paying in their personal capacity or unemployed geologists.

# Introduction to Leapfrog Edge

## Course Outline



B&S Geological invites you to attend our Introduction to Leapfrog Edge course to be held at our office in Bramley North, Sandton, Johannesburg or Online. Please see the training schedule for dates.

### Summary

**Duration:** 2 Day

**Course level:** Advanced

**Prerequisite:** Intermediate level skills in Leapfrog Geo

**Time:** 08:30am – 16:30pm

**Price:** R9 870 (Excl. VAT)

**Audience:** Professional/Student Geologists

**Location:** South Africa and UK (Online)

**Tel:** +27(0)22 007 0035

**Email:** [info@bnsgeo.co.za](mailto:info@bnsgeo.co.za)

### Course Description

This course assumes that attendees have a good knowledge of Leapfrog Geo (intermediate to advanced level), as well as the concepts of geostatistics and grade estimation techniques. This course is designed to equip participants with the skills to expand their knowledge on mineral resource estimation using Leapfrog Edge, Seequent's industry-standard resource estimation tool. Attendees of this course will be taken through the basics of data analysis and domain selection, domain estimation, variography, and block models.

## ***Course Outline***

- Data analysis and domain selection
- Refining numerical values using compositing
- Creating a Variogram Model in Leapfrog Edge
- Creating a Block Model
- Setting up the Estimators
- Block model estimates, KNA, and multi-element estimation
- Variables, calculations, and filters
- Block Model statistics and Validation
- Depletion Model and Mineral Resource Tabulation

## ***Target Audience***

Geologists, with modelling, geostatistics and grade estimation experience, wanting to expand on their knowledge of grade estimation using Leapfrog Edge.

## ***Equipment Requirements***

You will be required to bring your own laptop and mouse.

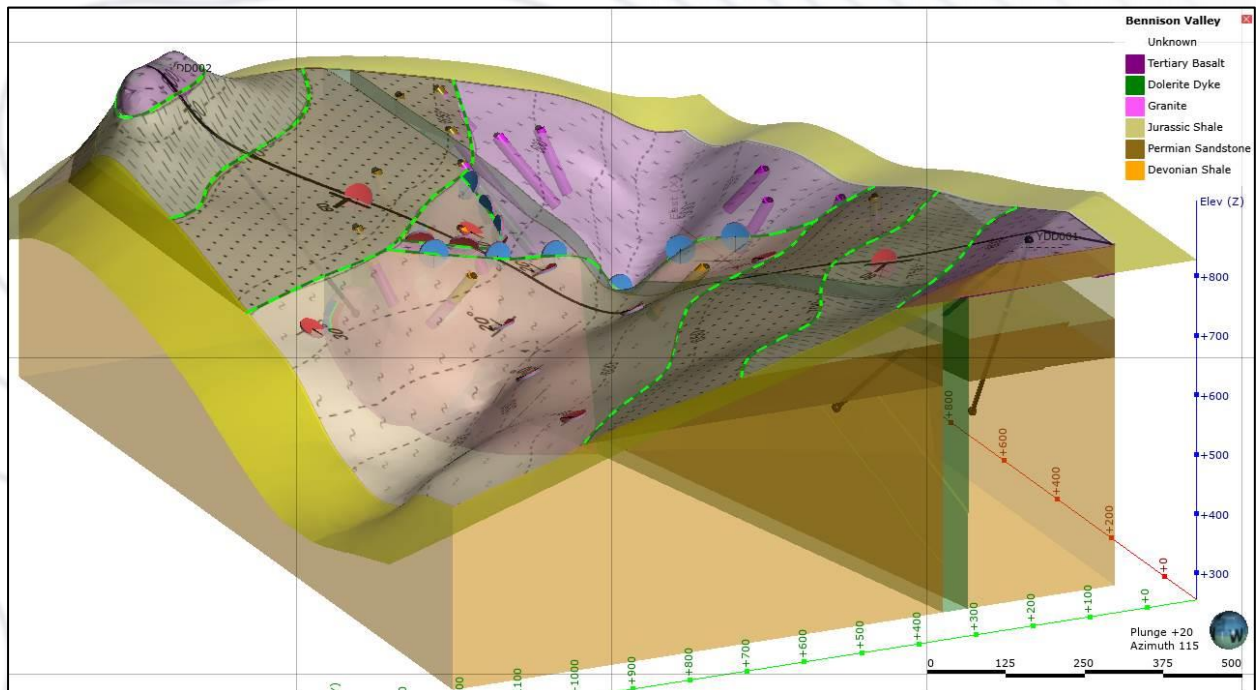
## ***Terms & Conditions***

Due to the limited seating, full payment (or Purchase Order) will be required to secure your spot on the course. Please enquire about a special concession for geologists paying in their personal capacity or unemployed geologists.



# Specialised Modelling using Leapfrog Geo- “From Maps to Models”

## Course Outline



B&S Geological invites you to attend our Specialised Modelling using Leapfrog Geo training course to be held at our office in Bramley North, Sandton, Johannesburg, and also now available Online. Please see the training schedule for dates.

### Summary

**Duration:** 1 Day

**Course level:** Intermediate

**Required skill:** Basic

**Price:** R5 250 (Excl. VAT)

**Audience:** Professional Geologists

**Location:** South Africa and UK (Online)

**Time:** 08:30am – 16:30pm

**Tel:** +27(0)22 007 0035

**Email:** [info@bnsgeo.co.za](mailto:info@bnsgeo.co.za)

### Course Description

This course is designed to further develop the skills of participants that are using or have used Leapfrog Geo. Attendees will be taken through the various techniques and tools used to create a 3D geological model from a 2D map. The training course also covers exporting volumes and presentation tools.

### Course Outline

- Importing a georeferenced map;
- Importing mesh, GIS Vector data, and polylines;

- Digitising a fault from a map;
- Creating structural data from a map;
- Creating a 3D geological model from a map;
- Adding drillholes to the 3D model;
- Adding planned drillholes;
- Planning drillholes in Leapfrog Geo;
- Exporting volumes and geological models;
- Presentation tools (enhanced cross sections and 3D scene files);
- Assessment.

### ***Target Audience***

Geologists, with beginner modelling experience, wanting to learn how to create a 3D geological model from a map using Leapfrog Geo.

### ***Equipment Requirements***

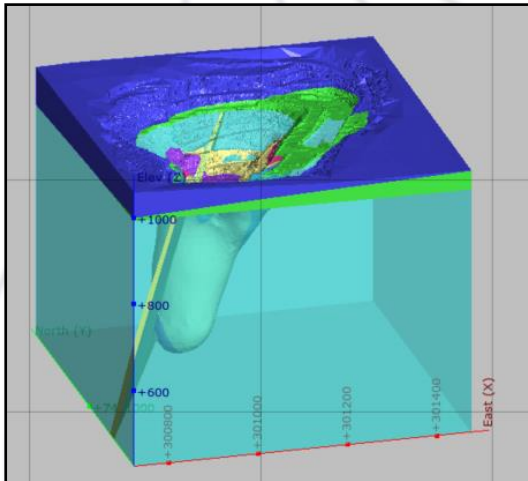
You will be required to bring your own laptop and mouse.

### ***Terms & Conditions***

Due to the limited seating, full payment will be required to secure your spot on the course. Please enquire about a special concession for geologists paying in their personal capacity or unemployed geologists.

# Specialised Modelling using Leapfrog Geo- Kimberlite Pipe

## Course Outline



B&S Geological invites you to attend our Deposit Specific Leapfrog Geo course to be held at our office in Bramley North, Sandton, Johannesburg or Online. Please see the training schedule for dates.

### Summary

**Duration:** 1 Day

**Course level:** Advanced

**Required skill:** Intermediate

**Price:** R5 250 (Excl. VAT)

**Audience:** Professional Geologists

**Location:** South Africa and UK (Online)

**Time:** 08:30am – 16:30pm

**Tel:** +27(0)22 007 0035

**Email:** [info@bnsgeo.co.za](mailto:info@bnsgeo.co.za)

### Course Description

This course is designed to further develop the skills of participants that are using or have used Leapfrog Geo. Attendees will be taken through the various techniques and tools used to create a 3D geological model of a kimberlite pipe deposit, including internal kimberlite facies and the surrounding country rocks. Also covered are mined-out modelling, block modelling and cross sections.

### Course Outline

- Simplifying drillhole lithological data (group lithologies);
- Creating a simplified geological model of a kimberlite pipe and country rocks;
- Editing the kimberlite pipe using the polyline tools;
- Creating a refined geological model for the internal kimberlite facies;
- Creating a mined/unmined model using a topographic pit shell;
- Combined models, to determine mined/unmined volumes;
- Block modelling;
- Exporting volumes/wireframes;
- Presentation tools (enhanced cross sections and 3D scene files).



## ***Target Audience***

Geologists, with modelling experience, wanting to learn how to create a 3D geological model of a kimberlite pipe using Leapfrog Geo. Experience in kimberlite pipe deposits is advantageous.

## ***Equipment Requirements***

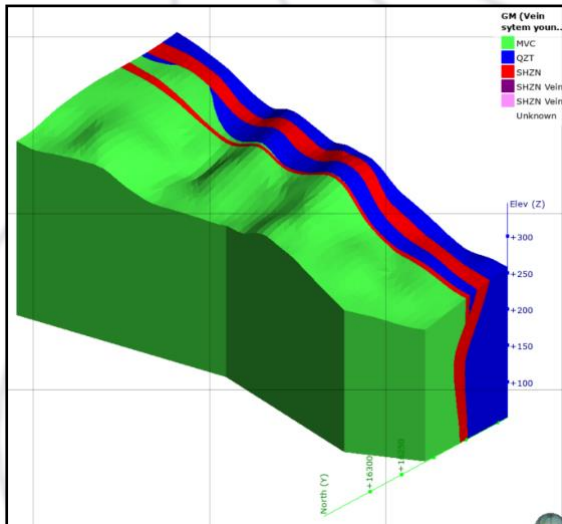
You will be required to bring your own laptop and mouse.

## ***Terms & Conditions***

Due to the limited seating, full payment will be required to secure your spot on the course. Please enquire about a special concession for geologists paying in their personal capacity or unemployed geologists.

# Specialised Modelling using Leapfrog Geo- Lode Gold Deposits

## Course Outline



B&S Geological invites you to attend our Deposit Specific Leapfrog Geo course to be held at our office in Bramley North, Sandton, Johannesburg, and also now available Online. Please see the training schedule for dates.

### Summary

**Duration:** 2 Day

**Course level:** Advanced

**Required skill:** Intermediate

**Price:** R9 870 (Excl. VAT)

**Audience:** Professional Geologists

**Location:** South Africa and UK (Online)

**Time:** 08:30am – 16:30pm

**Tel:** +27(0)22 007 0035

**Email:** [info@bnsgeo.co.za](mailto:info@bnsgeo.co.za)

### Course Description

This course is designed to further develop the skills of participants that are using or have used Leapfrog Geo. Attendees will be taken through the various techniques and tools used to create a 3D geological model for a Lode Gold Deposit. The training course also covers numerical modelling, block modelling, and cross sections.

### Course Outline

- Importing and validating drillhole data;
- Using interval selection for veins;
- Creating a Geological Model for a Lode Gold Deposit;
- Creating a Mineralised Model using assay data;
- Numerical Modelling;
- Block modelling;
- Statistics for Block Models;
- Presentation tools (enhanced cross sections and 3D scene files).

## ***Target Audience***

Geologists, with modelling experience, wanting to learn how to create a 3D geological model for a Lode Gold Deposits using Leapfrog Geo.

## ***Equipment Requirements***

You will be required to bring your own laptop and mouse.

## ***Terms & Conditions***

Due to the limited seating, full payment will be required to secure your spot on the course. Please enquire about a special concession for geologists paying in their personal capacity or unemployed geologists.



# Introduction to Seequent Central

---

## Course Outline



B&S Geological invites you to attend our Introduction to Seequent Central course to be held at our office in Bramley North, Sandton, Johannesburg or Online. Please see the training schedule for dates.

### **Summary**

**Duration:** Half Day

**Course level:** Beginner

**Required skill:** Basic

**Price:** R2 625 (Excl. VAT)

**Audience:** Professional Geologists

**Location:** South Africa and UK (Online)

**Time:** 08:30am – 12:30pm

**Tel:** +27(0)22 007 0035

**Email:** [info@bnsgeo.co.za](mailto:info@bnsgeo.co.za)

### **Course Description**

This course is designed to develop the skills required to manage Leapfrog Geo projects using the data management software, Seequent Central. Attendees will be taken through the various techniques and tools used to link up project for better data management.

### **Course Outline**

- Sharing an existing project;
- Interacting with project using the Central Browser;
- Using the Central Pathways;
- Branches and nodes;
- Adding users and setting permissions;
- Linking surfaces and data;
- Updating existing surfaces.

## ***Target Audience***

Geologists and Project Managers, with or without modelling experience, wanting to learn how to better manage Leapfrog Geo projects and data.

## ***Equipment Requirements***

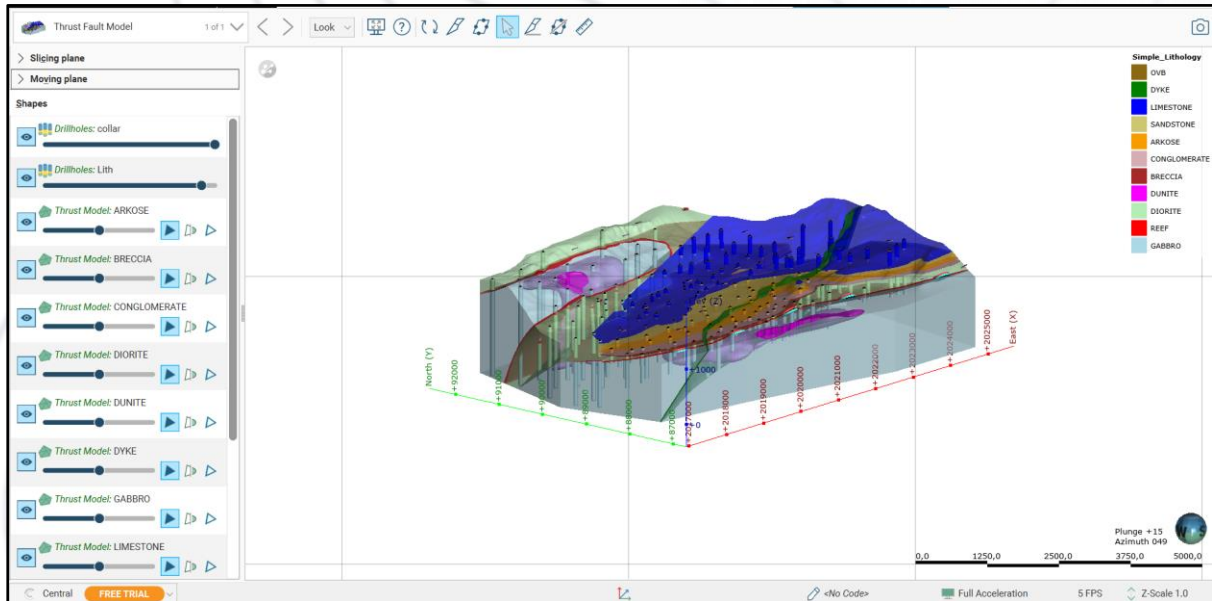
You will be required to bring your own laptop and mouse.

## ***Terms & Conditions***

Due to the limited seating, full payment will be required to secure your spot on the course. Please enquire about a special concession for geologists paying in their personal capacity or unemployed geologists.

# Leapfrog for Managers

## Course Outline



B&S Geological invites you to attend our Leapfrog for Managers course to be held at our office in Bramley North, Sandton, Johannesburg. Please see the training schedule for available dates.

### Summary

**Duration:** 2 Hours

**Course level:** Beginner

**Required skill:** Basic

**Price:** Free

**Audience:** Professional Geologists/Managers

**Location:** South Africa and UK (Online)

**Time:** 10:30am – 12:30pm

**Tel:** +27(0)22 007 0035

**Email:** [info@bnsgeo.co.za](mailto:info@bnsgeo.co.za)

### Course Description

This course is designed to introduce attendees to Leapfrog Viewer, a free desktop application that allows you to view Scene Files that have been exported from Leapfrog modelling products. Attendees of this course will be taken through the various steps required to use Leapfrog Viewer to navigate three-dimensional (3D) geological models.

### Course Outline

- Creating a Seequent ID;
- Downloading Leapfrog Viewer;
- Opening a Scene File;
- Interacting with the Scene File in Leapfrog Viewer.



## ***Target Audience***

Geologist, non-geologists, or managers wanting to learn how to view and interact with Scene Files exported from Leapfrog modelling products.

## ***Equipment Requirements***

You will be required to bring your own laptop and mouse.

## ***Terms & Conditions***

Due to the limited seating, please enquire about the available dates and register for the course to secure your seat.

# Course Information

## Leapfrog Geo Training

**\*NB.** - Due to limited space, **full payment (or Purchase Order)** is required to secure your spot.  
Please enquire about the registration form and the discount for multiple courses purchased.

Course Name	Cost	Date
<b>Introduction to Leapfrog Geo</b> <b>2 CPD Credits</b> <b>(Validation Number: 2020-0021-001288)</b> <b>(Basic – 4 half days)</b> <b>Online</b>	R 9 870.00 (Excl. VAT)	28 – 31 January 2025 (Online)
		13 – 16 May 2025 (Online)
		26 – 29 August 2025 (Online)
<b>Intermediate Modelling in Leapfrog Geo</b> <b>2 CPD Credits</b> <b>(Validation Number: 2021-0021-001724)</b> <b>(Intermediate – 4 half days)</b> <b>Online</b>	R 9 870.00 (Excl. VAT)	11 – 14 March 2025 (Online)
		24 – 27 June 2025 (Online)
		7 – 10 October 2025 (Online)
<b>Specialised Modelling using Leapfrog Geo – From Maps to Models</b> <b>1 CPD Credit</b> <b>(Validation Number: 2020-0021-001435)</b> <b>(Advanced – 1 day)</b> <b>Online</b>	R 5 250.00 (Excl. VAT)	20 February 2025 (Online)
		5 June 2025 (Online)
		18 September 2025 (Online)
<b>Specialised Modelling using Leapfrog Geo – Kimberlite Pipe</b> <b>1 CPD Credit</b> <b>(Validation Number: 2020-0021-001436)</b> <b>(Advanced – 1 day)</b> <b>Online</b>	R 5 250.00 (Excl. VAT)	3 April 2025 (Online)
		17 July 2025 (Online)
		30 October 2025 (Online)
<b>Specialised Modelling using Leapfrog Geo – Lode Gold Deposit</b> <b>2 CPD Credits</b> <b>(Validation Number: 2020-0021-001434)</b> <b>(Advanced – 4 half days)</b> <b>Online</b>	R 9 870.00 (Excl. VAT)	22 – 25 April 2025 (Online)
		5 – 8 August 2025 (Online)
		18 – 21 November 2025 (Online)

<b>Geostatistics and Grade Estimation using Leapfrog Edge (Advanced – 5 Days) Online</b>	R 17 600.00 (Excl. VAT)	To be announced
<b>Introduction to Seequent Central (Basic – Half day) Online</b>	R 2 625.00 (Excl. VAT)	1 April 2025
		15 July 2025
		28 October 2025

Below is a list of the minimum and recommended computer requirements for running Leapfrog Geo Software. The minimum requirements are adequate for our short courses, whilst the recommended requirements are advised for customised training.

<b>Component</b>	<b>Minimum Requirements</b>	<b>Recommended Requirements</b>
RAM	4 GB	32 GB RAM or more
CPU	Intel Core i3, i5 or i7 CPU (2nd Generation) or later Intel Xeon	Intel Core i7-6800k Intel Core i7-6900k Intel Core i7-7700 Intel Xeon E5-2630 v3
Free Hard Disk Space	Hard Disk Drive (HDD) 250 GB capacity 25 GB free space	Solid-State Drive (SSD) 1 TB or larger capacity 100 GB free space
Graphics Card GPU	At least 512 MB of video memory	2 GB Video RAM NVIDIA GeForce GTX 950 or better AMD Radeon RX 460 or better Latest available graphics drivers
Display Resolution	1280 x 720 Single display	1920 x 1080 or higher Multiple displays
<a href="https://www.seequent.com/help-support/system-requirements/leapfrog3d/">https://www.seequent.com/help-support/system-requirements/leapfrog3d/</a>		